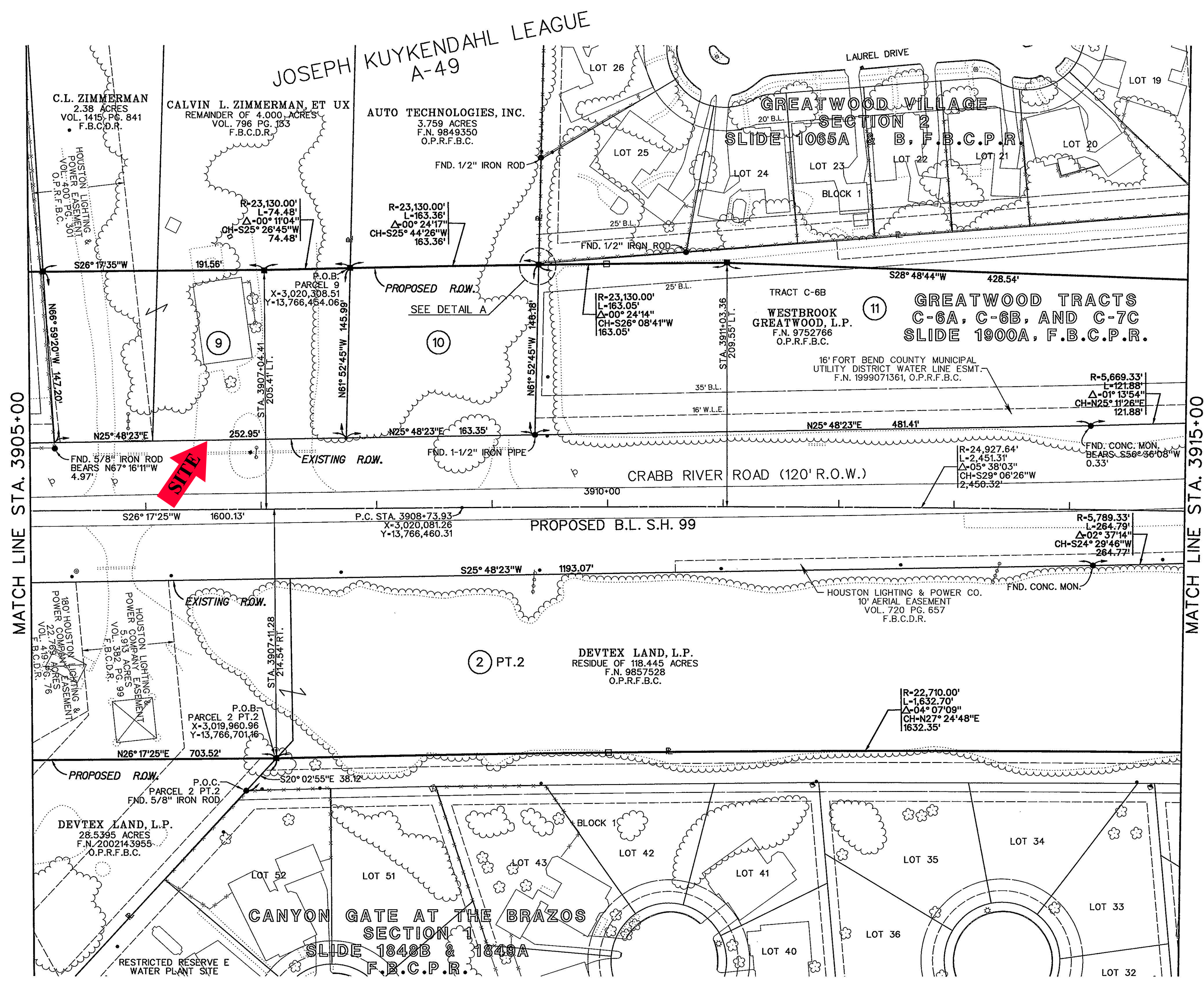


- LEGEND**
- EXISTING MONUMENT AS NOTED
  - SET 5/8" IRON ROD WITH CAP STAMPED "PBS&J" UNLESS OTHERWISE NOTED
  - SET 5/8" IRON ROD WITH CAP STAMPED "PBS&J" ON R.O.W. AT 1000' STATIONS

- NOTES:**
1. ALL BEARINGS ARE BASED ON THE TEXAS STATE PLANE COORDINATE SYSTEM, SOUTH CENTRAL ZONE, NAD83 (1993 ADJUSTMENT). ALL COORDINATES AND DISTANCES ARE SURFACE AND MAY BE CONVERTED TO GRID BY MULTIPLYING BY A COMBINED ADJUSTMENT FACTOR OF 0.999870.
  2. F.N. DENOTES FILE NUMBER, O.P.R.F.B.C. DENOTES OFFICIAL PUBLIC RECORDS OF FORT BEND COUNTY, F.B.C.D.R. DENOTES FORT BEND COUNTY DEED RECORDS AND F.B.C.M.R. DENOTES FORT BEND COUNTY MAP RECORDS.



JOSEPH KUYKENDAHL LEAGUE, A-49					
PARCEL	EXISTING	OWNER	FILE NUMBER	TAKING	REMAINDER
9	6.380 AC.	CALVIN L. ZIMMERMAN, ET UX	VOL. 1415, PG. 841 VOL. 796, PG. 133	0.870 AC.	5.510 AC.
10	3.759 AC	AUTO TECHNOLOGIES, INC.	9849350	0.548 AC.	3.211 AC.
11	2.259 AC. (CALC)	WESTBROOK GREATWOOD, L.P.	SLIDE 1900A	1.878 AC.	0.381 AC.

**S.H.99 GRAND PARKWAY  
SEGMENT "C"**

**PBS&J** 1880 S. Dairy Ashford  
Suite 300  
Houston, Texas 77077-4760  
281-493-5100 Fax 281-493-1047

FED. RD. DIV. NO.	STATE	FEDERAL AID AND PROJECT NO.	SHEET NO.
	TEXAS		2
STATE DIST. NO.	COUNTY	CONTROL NO.	SECTION NO.
	FORT BEND		