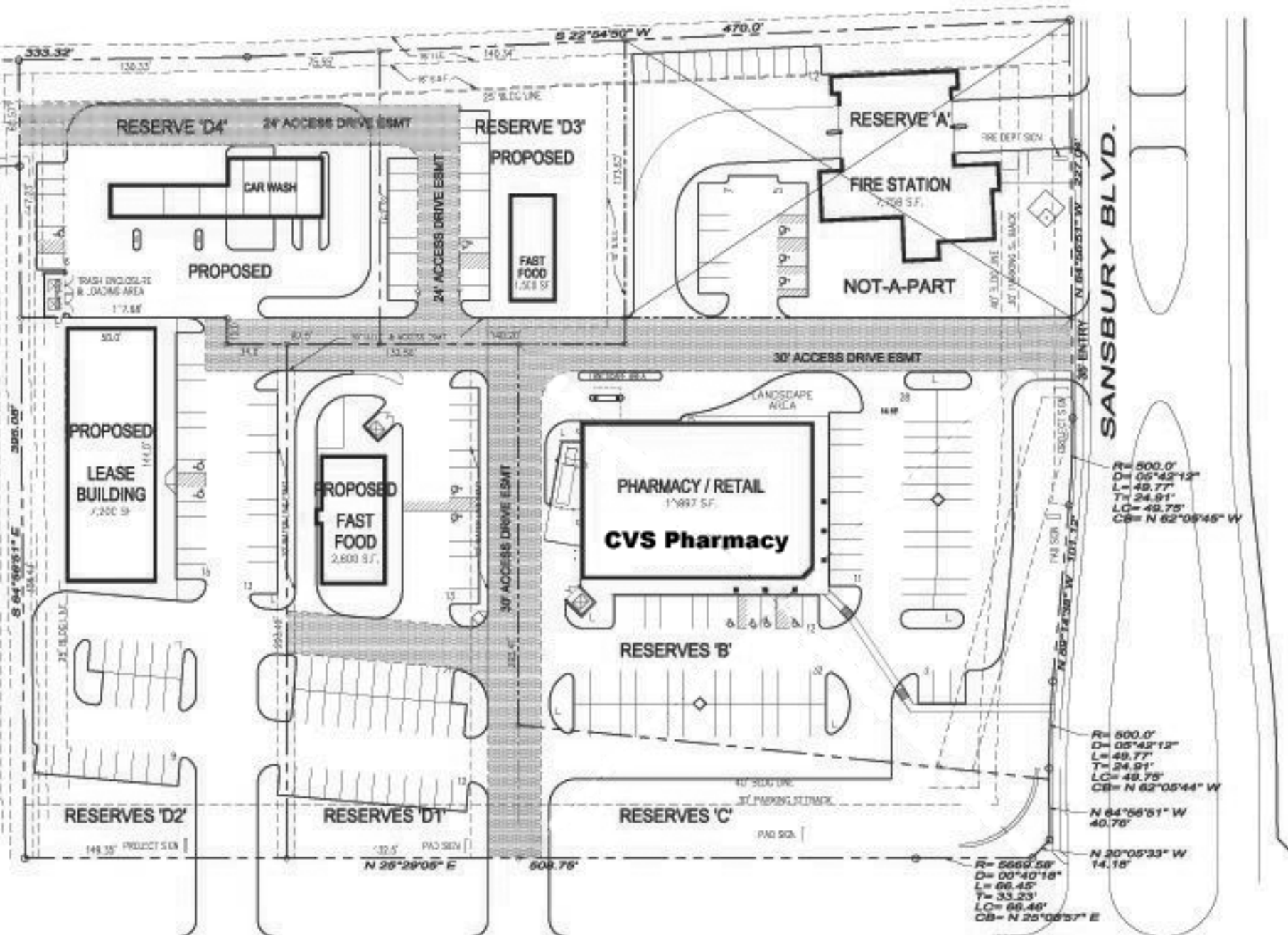


# GREATWOOD TRACT C-6A

SANSBURY BOULEVARD AT CRABB RIVER ROAD  
FT. BEND, COUNTY, TEXAS

## SITE DATA - PROPOSED DEVELOPMENT

GROSS LAND AREA	6.641 ACRES (289,266 S. F.)
NET LAND AREA	5.4814 ACRES (238,771 S. F.)
CONDEMNATION AREA	1.1582 ACRES (50,495 S. F.)
<b>RESERVE 'A'</b>	<b>0.9800 ACRES (41,818 S. F.)</b>
FIRE STATION	7,758 S.F.
24 PARKING SPACES (3 HC)	3.09 AUTOS/MGLA
<b>RESERVE 'B' &amp; 'C'</b>	<b>2.1700 ACRES (94,527 S. F.)</b>
PAD BUILDING AREA	11,987 S.F.
86 PARKING SPACES (4 HC)	7.17 AUTOS/MGLA
<b>RESERVE 'D1'</b>	<b>0.8925 ACRES (38,878 S. F.)</b>
PAD BUILDING AREA	2,800 S.F.
46 PARKING SPACES (2 HC)	17.68 AUTOS/MGLA
<b>RESERVE 'D2'</b>	<b>1.0540 ACRES (45,912 S. F.)</b>
LEASE BUILDING AREA	7,200 S.F.
48 PARKING SPACES (2 HC)	6.67 AUTOS/MGLA
<b>RESERVE 'D3'</b>	<b>0.5486 ACRES (23,897 S. F.)</b>
PAD BUILDING AREA	1,500 S.F.
20 PARKING SPACES (1 HC)	13.33 AUTOS/MGLA
<b>RESERVE 'D4'</b>	<b>0.7320 ACRES (31,886 S. F.)</b>
CAR WASH	4 BAYS MANUAL, 2 BAYS AUTOMATIC
6 PARKING SPACES (1 HC)	
<b>RESERVE 'D5'</b>	<b>0.2836 ACRES (12,353 S. F.)</b>



CRABB RIVER ROAD (FM 2759)  
(FUTURE GRAND PARKWAY FEEDER)



2401 FOUNTAINVIEW, SUITE 500  
HOUSTON, TEXAS 77057  
(713) 789-3600, FAX (713) 977-7288

## SCHEME 7.10.1A

DATE: 6/8/2002

L = LANDSCAPE PLANTING AREA

0 40 80

