

Proposed Retail Development Fairfield Village Retail & Pads - Scheme A

Fairfield Village Dr. + Cypresswood Drive, Harris County, Texas

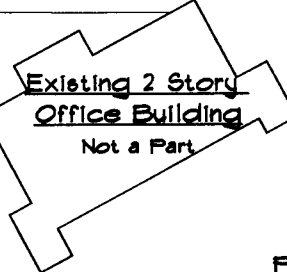
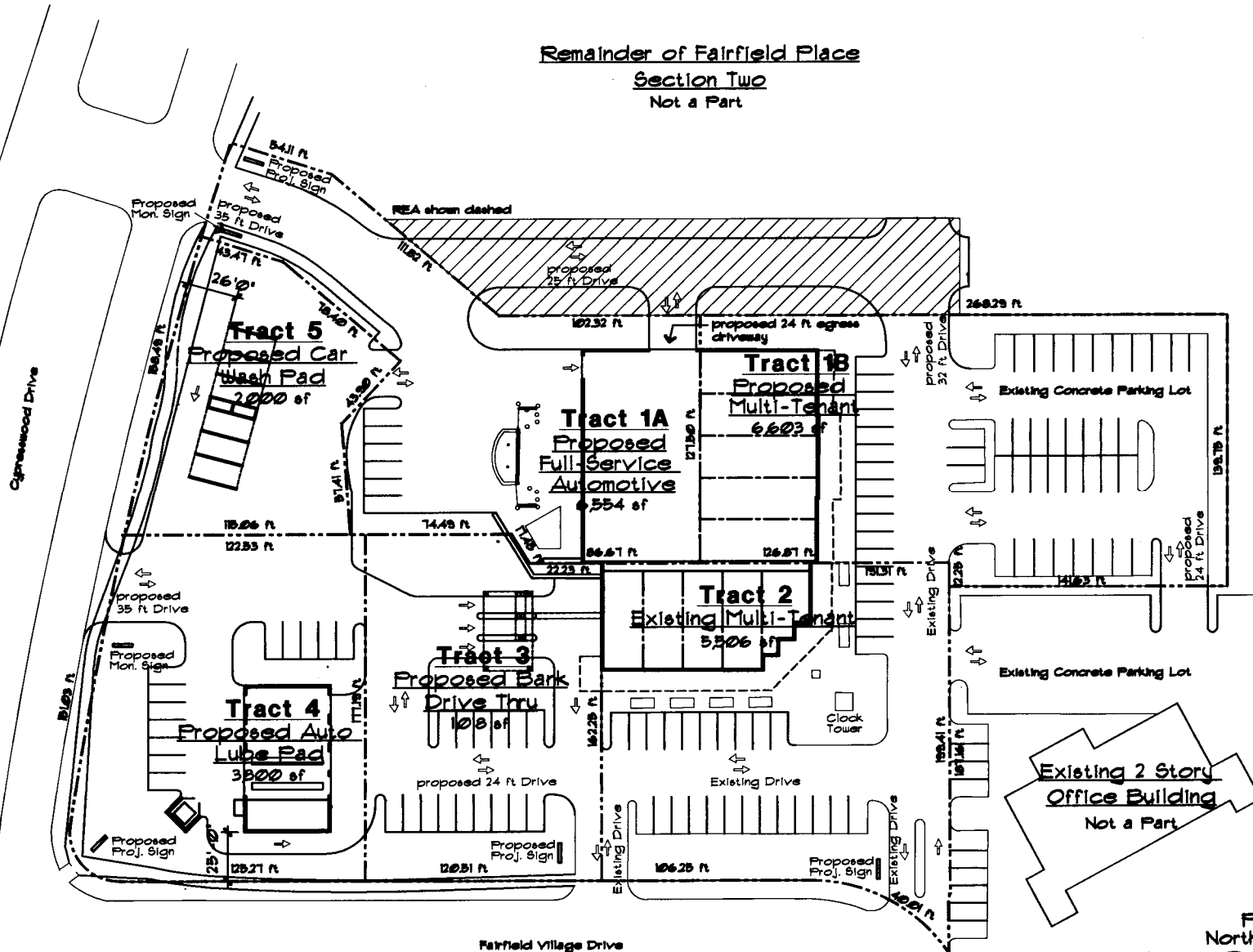
A Project of Concorde Realty Development

2401 Fountainview, Suite 500
Houston, Texas 77057
(713) 789-3600

Site Data:

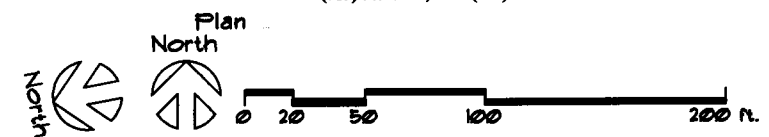
Gross Land Area	3.486 ac	(151,852 sf)
Fairfield Reserve A		
Tract 1A	0.623 ac	(27,159 sf)
Tract 1B	0.825 ac	(35,934 sf)
Tract 2	0.677 ac	(29,477 sf)
Tract 3	0.475 ac	(20,713 sf)
Tract 4	0.563 ac	(24,532 sf)
Tract 5	0.322 ac	(14,036 sf)

Remainder of Fairfield Place
Section Two
Not a Part



CONCORDE REALTY DEVELOPMENT
(713) 789-3600, FAX (713) 977-7288

FEHR GROSSMAN COX
Architects, Inc.
7400 Fannin, Suite 950 Houston, Texas 77054
(713) 797-0404 Fax (713) 797-6740



030390
12-19-03
FFMKT-site.dwg