

GREATWOOD TRACT C-6A

SANSBURY BOULEVARD AT CRABB RIVER ROAD
FT. BEND, COUNTY, TEXAS

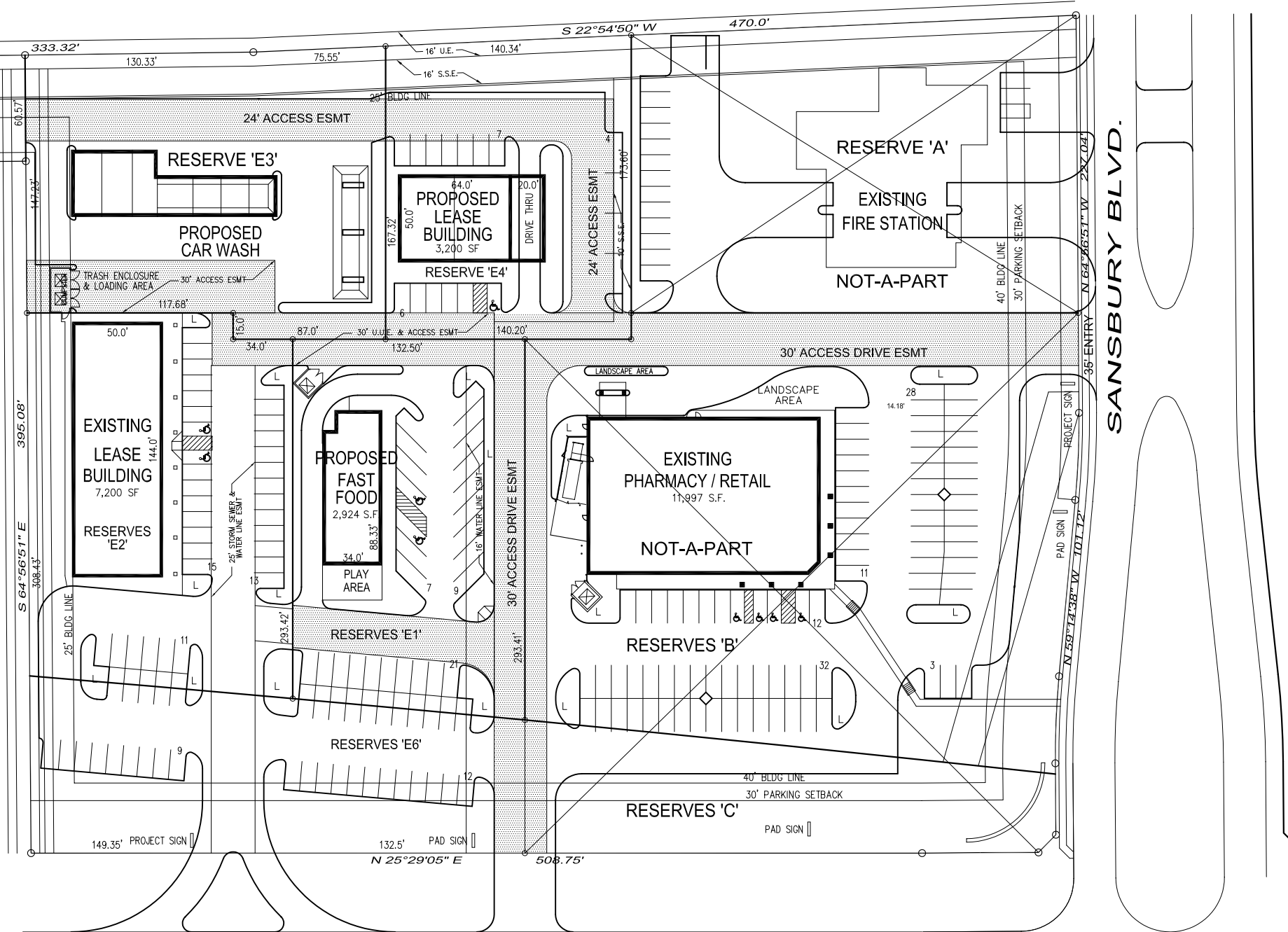
SITE DATA - PROPOSED DEVELOPMENT

GROSS LAND AREA	6.641 ACRES (289,266 S. F.)
NET LAND AREA	5.4814 ACRES (238,771 S.F.)
CONDEMNATION AREA	1.1592 ACRES (50,495 S.F.)
RESERVE 'A'	0.9600 ACRES (41,818 S.F.)
FIRE STATION	16 PARKING SPACES (1 HC)
RESERVE 'B' & 'C'	2.1700 ACRES (94,527 S.F.)
PAD BUILDING AREA	11,997 S.F.
86 PARKING SPACES (4 HC)	7.17 AUTOS/MGLA
RESERVE 'E1'	0.6425 ACRES (27,986 S.F.)
PAD BUILDING AREA	2,924 S.F.
49 PARKING SPACES (2 HC)	16.76 AUTOS/MGLA
RESERVE 'E2'	0.7281 ACRES (31,718 S.F.)
LEASE BUILDING AREA	7,200 S.F.
48 PARKING SPACES (2 HC)	6.67 AUTOS/MGLA
RESERVE 'E3'	0.7320 ACRES (31,886 S.F.)
CAR WASH	4 BAYS MANUAL, 2 BAYS AUTOMATIC
RESERVE 'E4'	0.5486 ACRES (23,897 S.F.)
PAD BUILDING AREA	3,200 S.F.
17 PARKING SPACES (1 HC)	5.3125 AUTOS/MGLA
RESERVE 'E5'	0.2836 ACRES (12,353 S.F.)
RESERVE 'E6'	0.5762 ACRES (25,100 S.F.)



4615 Post Oak Place, Suite 210
Houston, Texas 77027
Phone: (713) 789-3600, Fax: (713) 977-7288

CRA ARCHITECTURE
Architecture . Interior Design . Planning
1415 North Loop West, Suite 1050, Houston, Texas 77008
Tele (713) 426.5565, Fax (713) 426.4244



**CRABB RIVER ROAD (FM 2759)
(FUTURE GRAND PARKWAY FEEDER)**

TRAFFIC SIGNAL CONTROL
OF INTERSECTION

SCHEME 7.12.4A

DATE: 5/31/2006

L = LANDSCAPE PLANTING AREA

