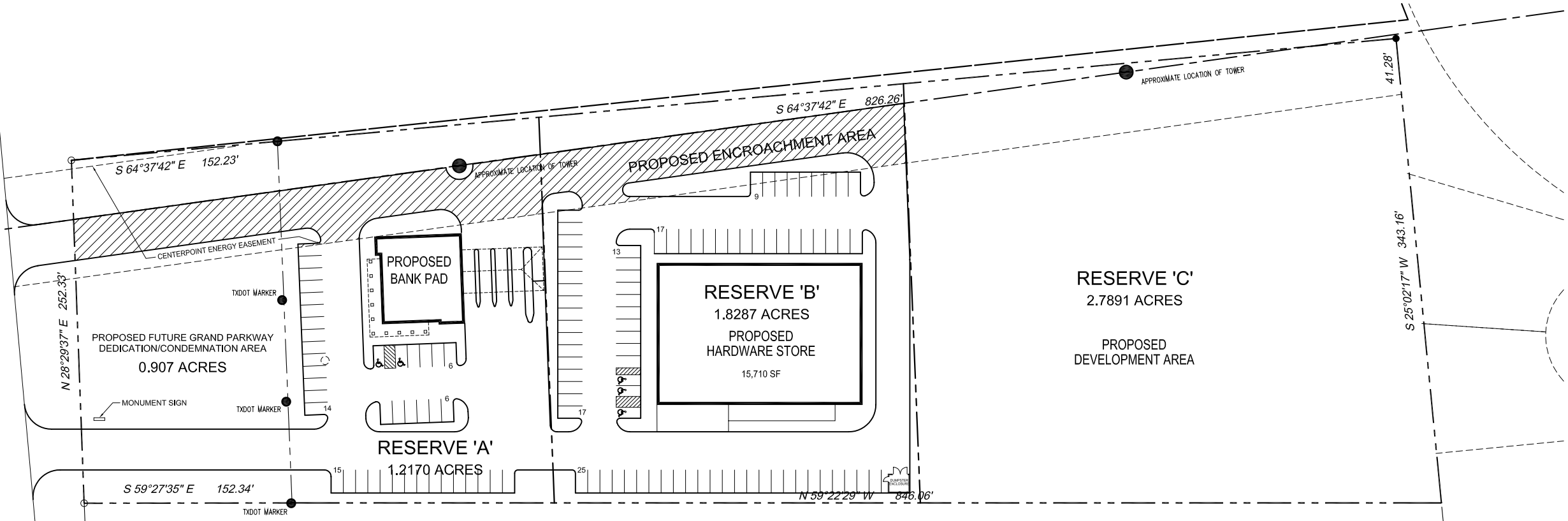


CRABB RIVER ROAD



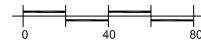
Proposed  
**SITE DATA**

<b>GROSS LAND AREA</b>	6.744 ACRES		
<b>RESERVE A</b>		<b>RESERVE B</b>	
GROSS LAND AREA	1.2170 ACRES (53,011 S. F.)	GROSS LAND AREA	1.8287 ACRES (79,657 S. F.)
GROSS BUILDING AREA	3,300 S.F.	GROSS BUILDING AREA	15,710 SF
<b>PARKING</b>		<b>PARKING</b>	
PARKING SPACES	41 AUTOS (3 HC)	PARKING SPACES	81 AUTOS (3 HC)
PARKING RATIO	12.42 SPACES/MGA	PARKING RATIO	5.1560 SPACES/MGLA
<b>RESERVE C</b>			
GROSS LAND AREA	2.7891 ACRES (121,492 S. F.)		

**SCHEME 4.02**

DATE: 8/23/2005

1612 Crabb River Road, Richmond, Texas 77469



**CONCORDE REALTY  
DEVELOPMENT**®

4615 Post Oak Place, Suite 210  
Houston, Texas 77027  
Phone: (713) 789-3600, Fax: (713) 977-7288

**Stephen R. Ritchey, AIA**  
Architecture + Consulting